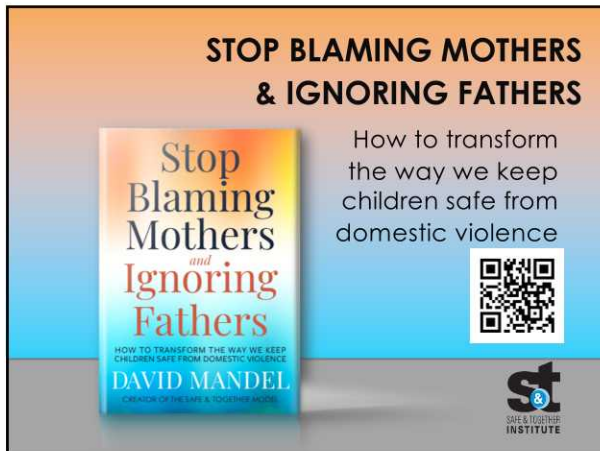
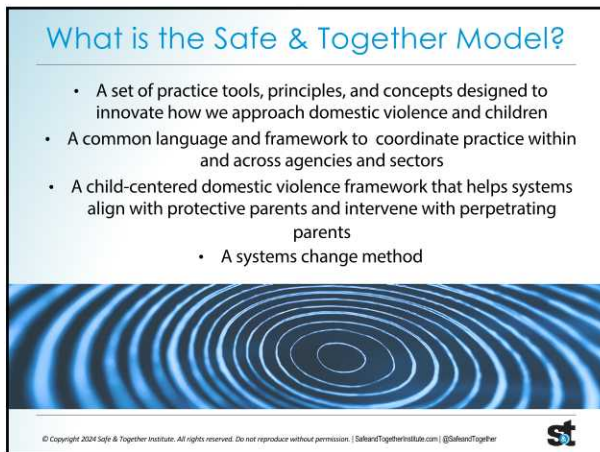




1



2

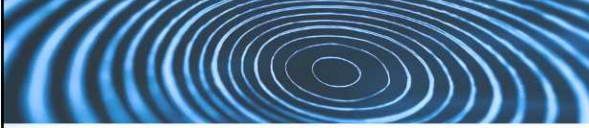


3

The Foundation

The Safe & Together Model is a perpetrator pattern-based approach to domestic violence assessment

The perpetrator's behaviour, not the relationship or the survivor's behaviour, is the source of the domestic violence child risk and safety concerns

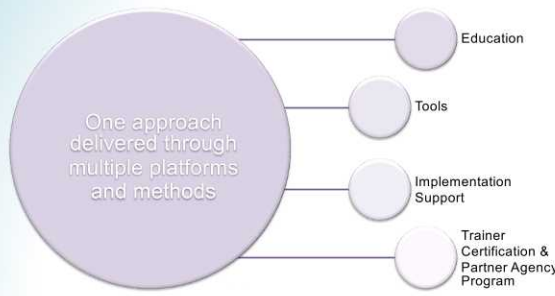


© Copyright 2024 Safe & Together Institute. All rights reserved. Do not reproduce without permission. | SafeandTogetherInstitute.com | @SafeandTogether

4

Safe & Together Institute

Our Ecosystem of Products, Services and Relationships

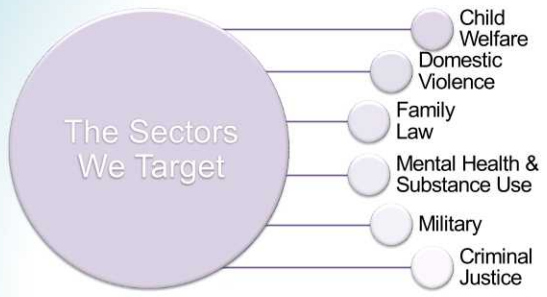


© Copyright 2024 Safe & Together Institute. All rights reserved. Do not reproduce without permission. | SafeandTogetherInstitute.com | @SafeandTogether

5

Safe & Together Institute

Our Ecosystem of Products, Services and Relationships



© Copyright 2024 Safe & Together Institute. All rights reserved. Do not reproduce without permission. | SafeandTogetherInstitute.com | @SafeandTogether

6

Global Leader/Local Partner



USA
 Alaska
 California
 Colorado
 Delaware
 District of Columbia
 Florida
 Iowa
 Maryland
 Michigan
 Minnesota
 Ohio

Oregon
 Nebraska
 New Jersey
 New Mexico
 New York
 North Carolina
 South Carolina
 Tennessee
 Texas
 Vermont
 Virginia

Canada
 Manitoba
 Ontario
 Maritimes

© Copyright 2024 Safe & Together Institute. All rights reserved. Do not reproduce without permission. | SafeandTogetherInstitute.com | [@SafeandTogether](https://twitter.com/SafeandTogether)

st

7

Global Leader/Local Partner



UK
 Barnardos Scotland
 20+ Local Authorities across Scotland
 Ministry of Defence
 Manchester & other cities
 10+ London Boroughs
 Scottish Women's Aid

© Copyright 2024 Safe & Together Institute. All rights reserved. Do not reproduce without permission. | SafeandTogetherInstitute.com | [@SafeandTogether](https://twitter.com/SafeandTogether)

st

8

Global Leader/Local Partner



Australia & New Zealand
 Family Court of Australia
 PATRICIA, Invisible Practices,
 STACY projects
 Queensland
 Western Australia
 Northern Territory
 Victoria
 South Australia
 New South Wales
 Australia Capital Territory


Asia
 Hong Kong
 Singapore
 Japan

© Copyright 2024 Safe & Together Institute. All rights reserved. Do not reproduce without permission. | SafeandTogetherInstitute.com | [@SafeandTogether](https://twitter.com/SafeandTogether)

st

9


Myth Definition



“Every myth presents itself as an authoritative, factual account, no matter how much the narrated events are at variance with ... ordinary experience.”

<https://www.britannica.com/topic/myth>

© Copyright 2024 Safe & Together Institute. All rights reserved. Do not reproduce without permission. | SafeandTogetherInstitute.com | [@SafeandTogether](https://www.instagram.com/SafeandTogether)



10

What is the Myth of the Child Witness?

The dominance of the idea that the nexus between domestic violence and children is seeing and hearing the violence and abuse

© Copyright 2024 Safe & Together Institute. All rights reserved. Do not reproduce without permission. | SafeandTogetherInstitute.com | [@SafeandTogether](https://www.instagram.com/SafeandTogether)




11

What is Missing?

- The missing perpetrator of the violence
- The missing parental role
- Leaving out gender
- Grasping violence, missing coercive control
- Targets, weapons, & victims
- Children aren't passive witnesses
- Intersectionalities matter
- Psychological impact is king (but maybe it shouldn't be)
- Babies make poor witnesses
- The parents don't live together anymore

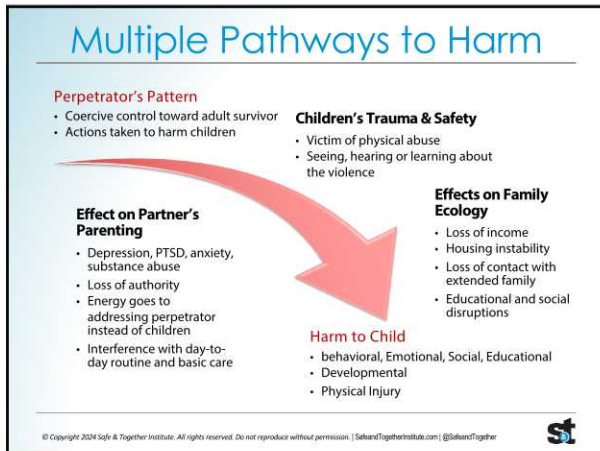
© Copyright 2024 Safe & Together Institute. All rights reserved. Do not reproduce without permission. | SafeandTogetherInstitute.com | [@SafeandTogether](https://www.instagram.com/SafeandTogether)



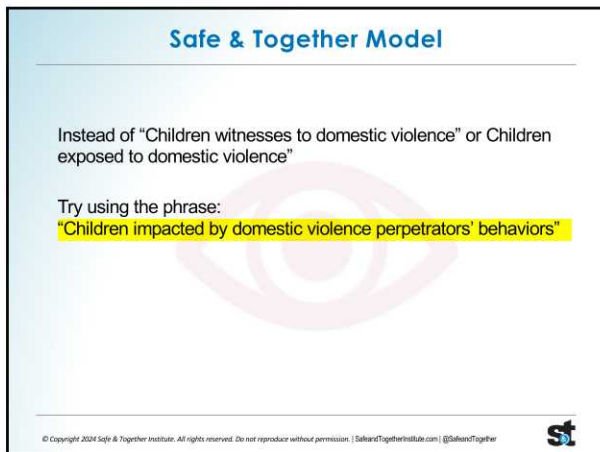
12



13



14




15

Safe & Together Model

If we want to bring the parenting role of the domestic violence perpetrator into view, we can use the phrase:

"Domestic violence perpetration is a parenting choice."

© Copyright 2024 Safe & Together Institute. All rights reserved. Do not reproduce without permission. | SafeandTogetherInstitute.com | @SafeandTogether



16

Safe & Together Model

Instead of saying: "Children are at greater risk of experiencing future life difficulties as result of being exposed to domestic violence in their home"

It may be better to say:

"The father's pattern of abuse and control has disrupted the normal functioning of the children. His behavior has forced them to move from the family home, miss days at school, and become disconnected from extended family. This has resulted in the youngest child regressing in her development."


© Copyright 2024 Safe & Together Institute. All rights reserved. Do not reproduce without permission. | SafeandTogetherInstitute.com | @SafeandTogether


17

Safe & Together Model

If we want to stop ignoring fathers' roles in the live of their children we can say:

"Fathers' choices and behaviors, good or bad (including abuse and violence) matter to child, partner and family functioning."

© Copyright 2024 Safe & Together Institute. All rights reserved. Do not reproduce without permission. | SafeandTogetherInstitute.com | @SafeandTogether



18

Safe & Together Model

Instead of asking the question:
"Did the child witness the violence?"

We can ask:
"How was the functioning of the child, the other parent, the family impacted by the perpetrator's pattern of coercive control and actions to harm the child?"

© Copyright 2024 Safe & Together Institute. All rights reserved. Do not reproduce without permission. | SafeandTogetherInstitute.com | @SafeandTogether




19

Benefits

It increases perpetrator accountability by:

- Making the perpetrator visible, showing them as an active, choice making person with a parental responsibility for the safety and well-being of children.
- Assessing for both child maltreatment and partner abuse behaviors in the same person
- More comprehensively and accurately naming pathways to the harm associated with a perpetrator's pattern.
- Increasing accountability for fathers who are abusive by tying back to the perpetrators' harms to children that often are blamed on the mother, e.g., missed doctor's appointments, unstable housing, truancy and child behavioral issues.

© Copyright 2024 Safe & Together Institute. All rights reserved. Do not reproduce without permission. | SafeandTogetherInstitute.com | @SafeandTogether



20

Behavioral Expectations

Connecting change to the children

_____ = Child Safety?

_____ = Child Healing from Trauma?

_____ = Child Stability and Nurturance?

_____ = Improved Family Functioning?

_____ = Reparations?

© Copyright 2024 Safe & Together Institute. All rights reserved. Do not reproduce without permission. | SafeandTogetherInstitute.com | @SafeandTogether



21

Engaging with the Safe & Together Institute

- Purchase "Stop Blaming Mothers & Ignoring Fathers: How to transform the way we keep children safe from domestic violence"
- Take ecourses on our Virtual Academy academy.safeandtogetherinstitute.com
- Subscribe to our web-based Perpetrator Pattern Mapping Tool through our Virtual Academy
- Contact us for remote or in person training opportunities for organizations, communities
- Attend one of our conferences
- Listen to our podcast "Partnered with a Survivor"
- Sign up for our mailing list to get updates on events, trainings, free webinars and more...

© Copyright 2024 Safe & Together Institute. All rights reserved. Do not reproduce without permission. | SafeandTogetherInstitute.com | @SafeandTogether



22



Mapping the Perpetrator's Pattern:
A Practitioner's Tool for Improving Assessment, Intervention, and Outcomes

© Copyright 2024 Safe & Together Institute. All rights reserved. Do not reproduce without permission. | SafeandTogetherInstitute.com | @SafeandTogether




23

Extend Your Learning:

Virtual Academy Course Catalog

The Safe & Together Institute's Virtual Academy delivers innovative and high-quality e-courses and virtual and blended trainings for child welfare, domestic violence, human services, and other professionals.




Recommended Courses:

- Multiple Pathways to Harm
- CORE

Recommended Resource:
[Perpetrator Pattern Mapping Tool](#)

© Copyright 2024 Safe & Together Institute. All rights reserved. Do not reproduce without permission. | SafeandTogetherInstitute.com | @SafeandTogether



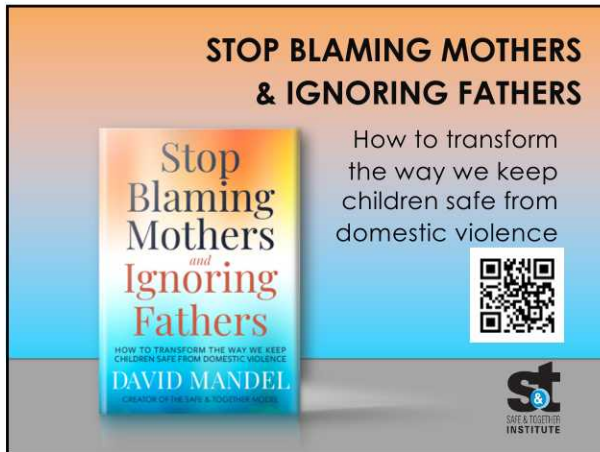
24



25



26



27



SAFE & TOGETHER

INSTITUTE

Concrete strategies.
Meaningful tools.
Real change.



860-319-0966 (USA) | safeandtogetherinstitute.com
academy.safeandtogetherinstitute.com



@SafeandTogether @davidgmandel Email: davidmandel@safeandtogetherinstitute.com

© Copyright 2024 Safe & Together Institute. All rights reserved. Do not reproduce without permission. | SafeandTogetherInstitute.com | @SafeandTogether