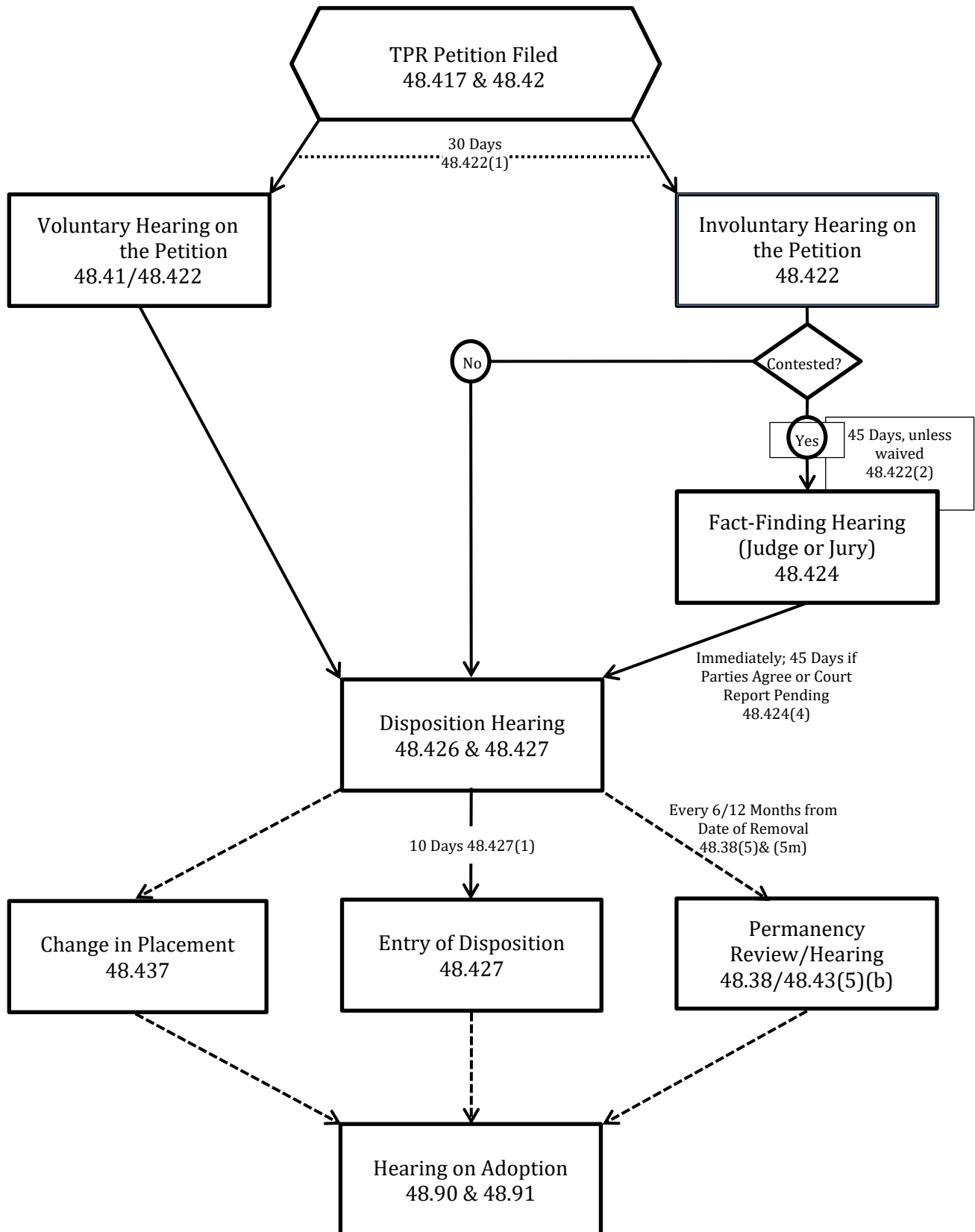


TPR Proceedings Flow Chart



TPR Bifurcated Process

Grounds

- Voluntary Consent
- Admission/No Contest to Involuntary TPR Grounds
- Default in Involuntary TPR
- Fact-Finding Hearing in Involuntary TPR
 - Burden of clear and convincing evidence (beyond a reasonable doubt in WICWA cases).
 - Decision made by judge or jury.

Disposition

- Child's Best Interests
- Court considers six factors in s. 48.426
 - Likelihood of child's adoption after TPR.
 - Age and health of the child (time of disposition and any removal).
 - Whether substantial relationship with parent or other family members and whether harmful to sever relationships.
 - Wishes of the child.
 - Duration of the separation of the parent from the child.
 - Whether child will enter into more stable and permanent family relationship.